

# RIDE ON TROWEL

## 36" SPRT-236B

### Technical Data Sheet



#### SPECIFICATION

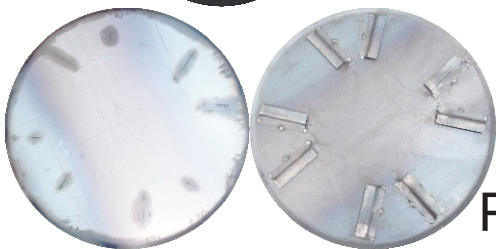
FEATURE	VALUE
Operation Mode	Ride-On
Working Widht	78in
Working Speed	150rpm
Blade Quantity	8
Blade Size	350X150mm
Fixed Hole Distance	4.75in
Model	Honda GX690
Type	Gasoline, Air Cooled, Single Cylinder
Power	22.5HP/3600rpm
Fuel Tank Volume	15L
Lubricant L	1.9L
Fuel Consumption	313g/kWh
Total Length	2060mm
Total Width	1040mm
Total Height	1350mm
Packing Size	2140X1100X1100mm
Weight	350Kg



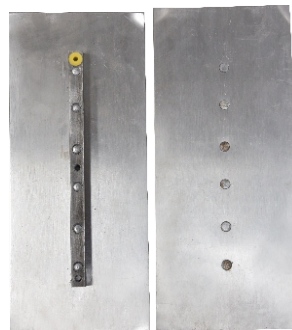
### Machine Accessories



Wheels



Plates



Blade



Machine Handle